



Roxtec ComSeal™

Passage étanche doté de l'indice de protection IP 55 avec un cadre en aluminium.

Le Roxtec ComSeal™ est classé IP 55 et il est disponible avec un cadre en aluminium peinture epoxy ou en acier inoxydable AISI 316. Le passage est disponible dans six tailles différentes pour accueillir jusqu'à 32 câbles.



- Résistant aux rongeurs
- Résistant à la corrosion
- Léger
- Surface optimisée

Caractéristiques du produit



IP/UL NEMA

Structure d'installation



Armoires et coffrets

Type de fixation



Boulonnage

Classements et certificats

Étanchéité

- IP 55, UL/NEMA 3,12,12K

Dimensions du cadre

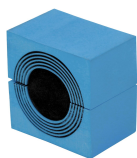
mm/kg

Les variantes de cadre ci-dessous sont une sélection limitée. Pour voir la gamme complète de cadres et de configurations, veuillez visiter [roxtec.com](https://www.roxtec.com).

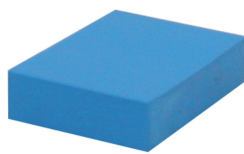
Titre	Ouvertures de cadre	Espace de remplissage	Dimensions externes WxHxD	Dimensions d'ouverture w x h	Poids	N° art.
COMSEAL 10 FRAME ASSEMBLY	1	40 x 100	80,5 x 173 x 55	56(+1/-1) x 149(+1/-1)	0,34	105300

Éléments d'étanchéité

Éléments d'étanchéité



Module CM avec Multidiameter™



Module de compensation plein CM



Gel d'assemblage Roxtec

Pour plus d'informations, veuillez consulter [roxtec.com](https://www.roxtec.com).



Kits de passage préconfigurés

mm/kg



ComSeal 12/3



ComSeal 10/4



ComSeal 10/7



ComSeal 10/10



ComSeal 12/6



ComSeal 12/9



ComSeal 12/12



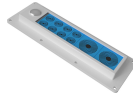
ComSeal 15/3



ComSeal 16/4



ComSeal 16/7



ComSeal 16/10



ComSeal 16/16



ComSeal 30/6



ComSeal 32/8



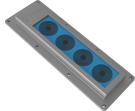
ComSeal 32/14



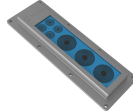
ComSeal 32/20



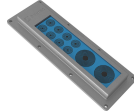
ComSeal 32/32



ComSeal 16/4 AISI316



ComSeal 16/7 AISI316



ComSeal 16/10 AISI316

Titre	Configuration	Dimensions externes WxHxD	Dimensions d'ouverture w x h	Poids	N° art.
ComSeal 12/3	3x (9.5-32.5)	88 x 216 x 55	56(+1/-1) x 169(+1/-1)	0.8	105303
ComSeal 10/4	2x (9.5-32.5), 2x (3.5-16.5)	80.5 x 173 x 55	56(+1/-1) x 149(+1/-1)	0.6	105299
ComSeal 10/7	6x (3.5-16.5), 1x (9.5-32.5)	80.5 x 173 x 55	56(+1/-1) x 149(+1/-1)	0.6	105301
ComSeal 10/10	10x (3.5-16.5)	80.5 x 173 x 55	56(+1/-1) x 149(+1/-1)	0.6	105302
ComSeal 12/6	2x (9.5-32.5), 4x (3.5-16.5)	88 x 216 x 55	56(+1/-1) x 169(+1/-1)	0.8	105305
ComSeal 12/9	8x (3.5-16.5), 1x (9.5-32.5)	88 x 216 x 55	56(+1/-1) x 169(+1/-1)	0.8	105306
ComSeal 12/12	12x (3.5-16.5)	88 x 216 x 55	56(+1/-1) x 169(+1/-1)	0.8	105307
ComSeal 15/3	3x (28.0-44.0)	90.5 x 223 x 55	61(+1/-1) x 195(+1/-1)	0.9	105308
ComSeal 16/4	4x (9.5-32.5)	80.5 x 233 x 55	56(+1/-1) x 209(+1/-1)	0.8	105310
ComSeal 16/7	3x (9.5-32.5), 4x (3.5-16.5)	80.5 x 233 x 55	56(+1/-1) x 209(+1/-1)	0.8	105312
ComSeal 16/10	2x (9.5-32.5), 8x (3.5-16.5)	80.5 x 233 x 55	56(+1/-1) x 209(+1/-1)	0.8	105313
ComSeal 16/16	16x (3.5-16.5)	80.5 x 233 x 55	56(+1/-1) x 209(+1/-1)	0.8	105314
ComSeal 30/6	6x (28.0-44.0)	155 x 231 x 55	120(+1/-1) x 195(+1/-1)	1.6	105315
ComSeal 32/8	8x (9.5-32.5)	135 x 241 x 55	103(+1/-1) x 209(+1/-1)	1.4	105316
ComSeal 32/14	6x (9.5-32.5), 8x (3.5-16.5)	135 x 241 x 55	103(+1/-1) x 209(+1/-1)	1.4	105320
ComSeal 32/20	4x (9.5-32.5), 16x (3.5-16.5)	135 x 241 x 55	103(+1/-1) x 209(+1/-1)	1.4	105321
ComSeal 32/32	32x (3.5-16.5)	135 x 241 x 55	103(+1/-1) x 209(+1/-1)	1.4	105322
ComSeal 16/4 AISI316	4x (9.5-32.5)	81 x 233 x 33	58.5(+1/-1) x 211(+1/-1)	1.5	105679
ComSeal 16/7 AISI316	3x (9.5-32.5), 4x (3.5-16.5)	81 x 233 x 33	58.5(+1/-1) x 211(+1/-1)	1.5	105680
ComSeal 16/10 AISI316	2x (9.5-32.5), 8x (3.5-16.5)	81 x 233 x 33	58.5(+1/-1) x 211(+1/-1)	1.5	105681

The product information provided by Roxtec does not release the purchaser of the Roxtec system, or part thereof, from the obligation to independently determine the suitability of the products for the intended process, installation and/or use.

Roxtec gives no guarantee for the Roxtec system or any part thereof and assumes no liability for any loss or damage whatsoever, whether direct, indirect, consequential, loss of profit or otherwise, occurred or caused by the Roxtec systems or installations containing components not manufactured by an authorized manufacturer and/or occurred or caused by the use of the Roxtec system in a manner or for an application other than for which the Roxtec system was designed or intended.

Roxtec expressly excludes any implied warranties of merchantability and fitness for a particular purpose and all other express or implied representations and warranties provided by statute or common law. User determines suitability of the Roxtec system for intended use and assumes all risk and liability in connection therewith. In no event shall Roxtec be liable for indirect, consequential, punitive, special, exemplary or incidental damages or losses.

The Roxtec products are offered and sold in accordance with the conditions of the Roxtec General Terms of Sales. The latest version of the Roxtec General Terms of Sales can be downloaded from <https://www.roxtec.com/en/about-us/about-roxtec/general-terms-of-sales/>

We reserve the right to make changes to the product and technical information without further notice. Any errors in print or entry are no claims for indemnity. The content of this publication is the property of Roxtec International AB and is protected by copyright.

This document was generated on: 2024-04-18